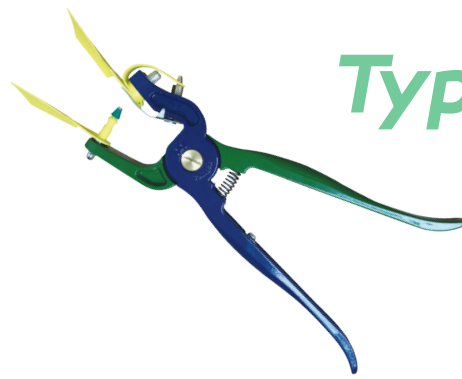


# Metal Typifix Applicator: Instructions of Use

Compatible with:



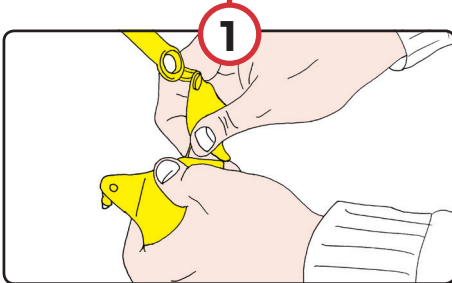
Typifix-S



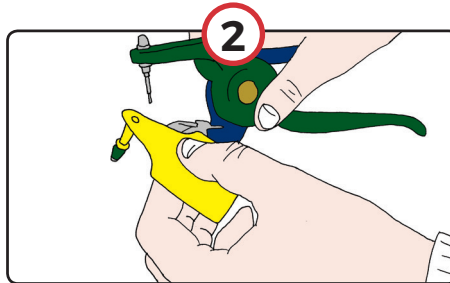
# Typifix-S

Instructional Videos on YouTube

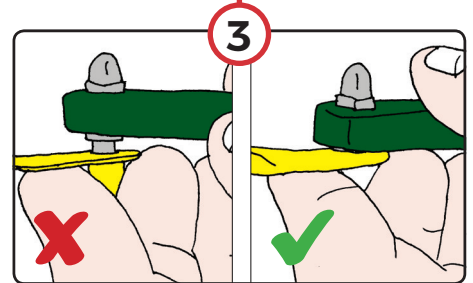
## LOADING



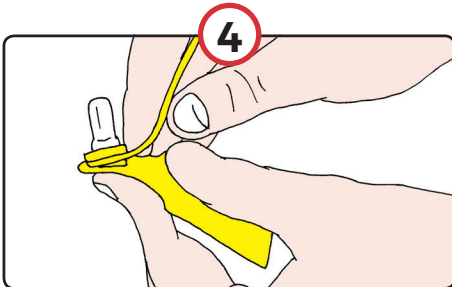
**1** Separate the male and female tag parts by pulling them apart.



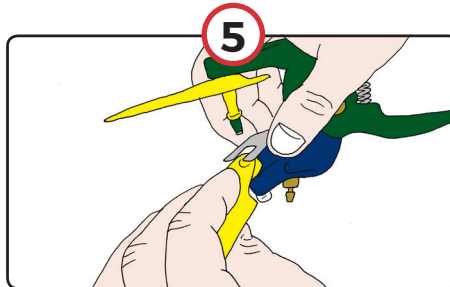
**2** Place male part of the tag into applicator pin first.



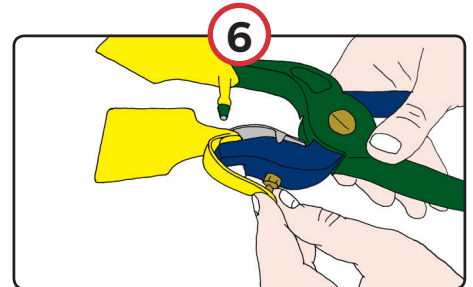
**3** Ensure the tag is pushed back as far as it will go.



**4** Press the sample container on the female part of the tag onto the socket on the front of the female tag.

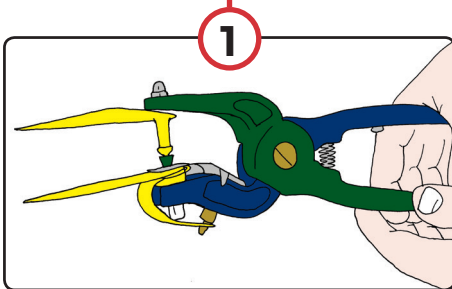


**5** Lift the metal clip on the applicator and slide the female part of the tag in place.

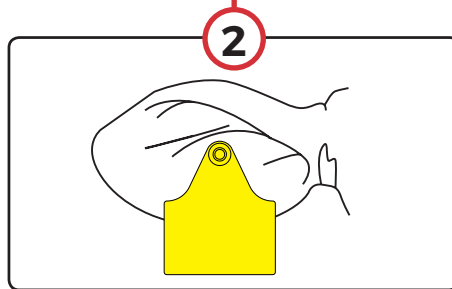


**6** Fold the starp of the sample container back and affix it onto the brass hook on the outside of the applicator jaw.

## TAGGING



**1** Gently close the applicators to make sure the metal cutter on the male tag aligns within the centre of the marked circle on the female tag part.



**2** Position the applicators with the female part of the tag inside the ear and squeeze firmly together to ensure satisfactory locking and a correct fit.

**We manufacture tags to the highest standards however successful identification is also achieved by paying particular attention to where and how the tag is applied.**

The following information contains general advice and industry guidance on applying tags.

- Make sure that you or your operator is properly trained and competent in the application of ear tags. Read the Health and Safety Executive's advice on the handling and housing of cattle (Agriculture Information Sheet 35).
- Make sure that you are using the correct applicator for the model of tag you are fitting. Always follow the manufacturer's instructions.
- Fit in cool weather (where possible) to minimise infections.
- Secure the animal's head to prevent jerking during tagging.
- Apply tags under hygienic conditions. The operator's hands, the ear, the tag and the applicator should be clean. Disinfect as necessary using an appropriate solution.
- When fitting plastic tags make sure the tags line up correctly on the applicator and will lock together when correctly fitted.
- In the case of plastic tags ensure that both parts of the tag have the same number.

- In the case of plastic tags the female part of the tag should always be on the inside of the ear, this will reduce the chance of the tag snagging or catching on obstructions such as fences, gates and feeding troughs. The male part of the tag should always enter from the back of the ear.



- Check the ear after about 10 days for signs of damage or infection. Consult your veterinary surgeon as necessary.
- Store unused tags in a clean dry container

Feedback forms and advice on best tagging practice can be obtained from:  
**DEFRA** - <https://www.gov.uk/government/publications/eartag-feedback-form-for-sheep-and-goat-keepers>

**DAERA** - <https://www.daera-ni.gov.uk/publications/ear-tag-performance-form>